

AUCKLAND AGRICULTURAL & PASTORAL ASSOCIATION



aucklandaandp.co.nz
aucklandap@asbshowgrounds.co.nz
09 638 9969

Issue 3 - Oct 18

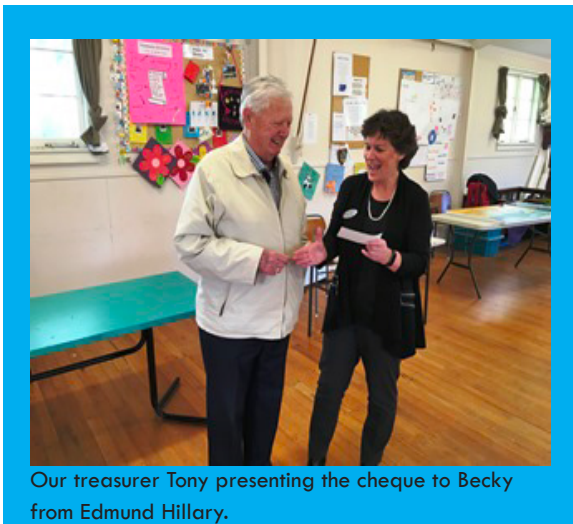
Welcome to the October Issue of *Art News*.

Once again our A&P membership was invited to display their artworks at the Edmund Hillary Retirement Village. What started three years ago as a small exhibition has grown in size and now hosts glass, ceramic and woodwork as well as a huge number of paintings. Opening night was very well attended and we were entertained by Heartstrings with their lovely classical music. Greg Moyle (our judge) presented the winners with their prizes and spoke about various artists that had impressed him. Once again Ryman Health laid on an astonishing array of food and wine that would have impressed any food critic. As the evening came to an end Sasha and Natarani (Heartstrings) played requests from the residents; such a talented couple. A lovely evening was had by all.

The successful sales resulted in the Stroke Foundation and A&P Youth Art receiving \$2518 each.



First Place Winner Ken Garrett - Yellow Light with Judge Greg Moyle



Our treasurer Tony presenting the cheque to Becky from Edmund Hillary.



The Organising Committee with Becky. Well done team!

Congratulations to all the winners.

1st Place - Ken Garrett, *Yellow Light*

2nd Place - Jennifer Preyer, *Striking Gold*

3rd Place - Lynn Fuller, *Contemplating my Future*

Merits - Maureen Langford, *St Heliers Bay*

Nora Grieve, *Silken Poppies*

Elaine Law, *Outside the Taite Modern*

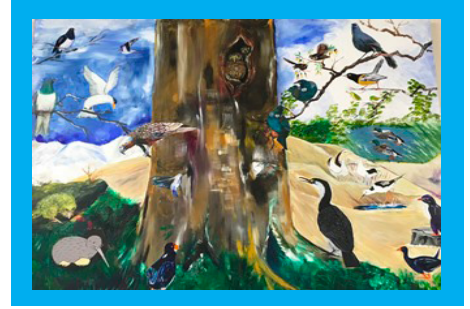
Jenny Locke-Forbes, *Grandad's Shed*

SPECIAL MEMBERS ONLY OFFER - Have you got an event coming up?

Advertise for free in our next issue of *Art News*. Contact aucklandap@asbshowgrounds.co.nz

New Zealand Native Birds

This painting was a joint effort from ten members of the Auckland A&P Association and was painted for the Girl Guides in Patterson Ave, Mission Bay.



Workshop with Peter Caley

Early in September six members of Bartizans enjoyed a challenging workshop under the expert tuition of international artist Peter Caley.

Angela Maxwell kindly offered her home for those available to learn some of the tips offered:

- Stand in a relaxed manner to paint
- Use the basic laws of composition
- Ensure each of the four corners of a canvas has a different colour/tone and bring the same colour from one side somewhere into the other to connect the painting
- Use bluer hues for distance as the atmosphere changes the colour
- Yellow makes something appear to be right in the foreground
- Load the brush with paint, sometimes a different colour either side, and don't jab at the canvas, but drag the brush across it. This way the paint will distribute over the whole stroke
- Put the main focus of the painting on either side of the canvas, not the middle, as the eye travels to the sides of paintings first

All agreed it was a very stimulating, informative workshop.

Elaine Law



Say hello to our members - David & Jill McArthur

David and Jill met at a party where David's paintings were hanging on the wall. Jill requested to meet the artist who painted such interesting subjects and now fifty one years later they are still discussing the world of art. David paints in oils, Jill in many different mediums, her favourites being Acrylic and Charcoal. They both love to paint Wildlife and have a house full of animals. They also enjoy exploring many other subjects.

David has his studio at one end of the house and Jill has hers at the other, mainly because David likes to paint with music playing very loudly and Jill prefers to paint in silence to concentrate.

Both of them have attended many different art classes including Penny Otto's and Ben Ho's. In Jill's case she was also taught by Cynthia Taylor and Agnes Wood when she spent time at Whitecliffe Art School. Her current tutor is Tony Clarke.

They have won many awards between them and are always proud of each others achievements. "We like to work as a team and support each other but to be honest being artists we have our share of disagreements about colour and form, we do however value each others opinions and critiques."

They are members of Auckland East Arts Council and the Howick Art Group and are also frequent guests of the Bartizan group.

Rumour has it.

The 2019 Art Schedule will be available
this month!!

